

# GTI MAX

## THE BEST HEAVY TRAFFIC FLOORING SOLUTION

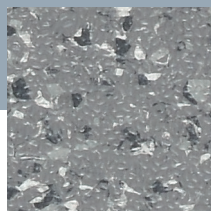
[gerflor.com](http://gerflor.com)



**Gerflor**  
theflooringgroup

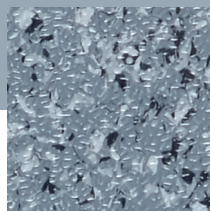


# REDISCOVER THE GTI MAX RANGE FOR AN EASY AND LONGLASTING RENOVATION



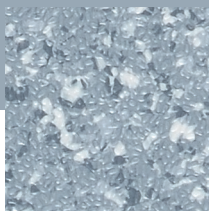
0266 - Peler

R



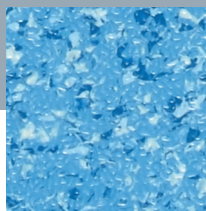
0252 - Titanium

R



0253 - Aluminium

R

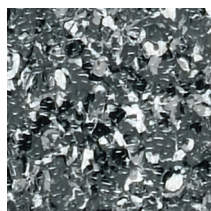


0255 - Saphir

R



0253 - Aluminium



0249 - Carbon

R



0247 - Magma

R



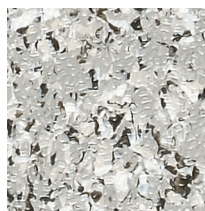
0267 - Levante

R



0264 - Ponente

R



0265 - Maestrale

R

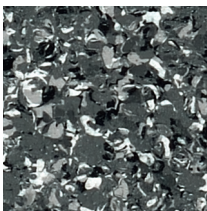
R

Rice emboss

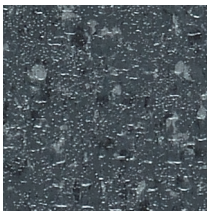
B

Concrete emboss





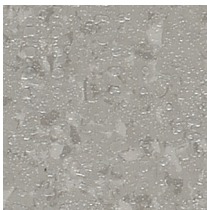
1249 - Tramontana **B**



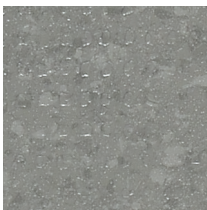
0260 - Ora **B**



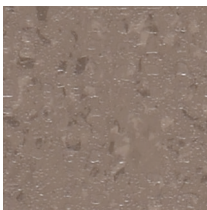
0262 - Libeccio **B**



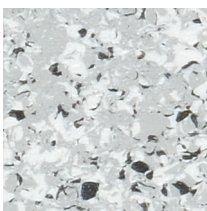
0263 - Bora **B**



0259 - Grecale **B**



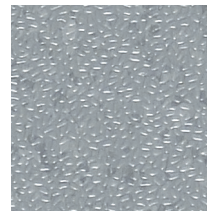
0261 - Scirocco **B**



0268 - Ermellino **B**



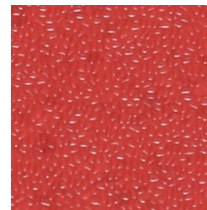
0236 - Black **R**



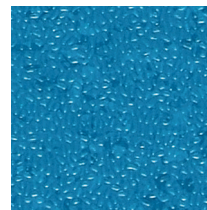
0234 - Light Grey **R**



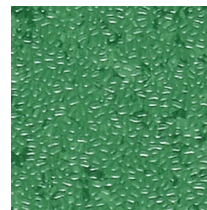
0235 - Dark Grey **R**



0232 - Red **R**

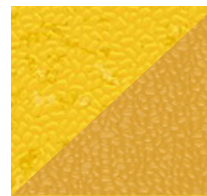


0230 - Blue **R**



0233 - Green **R**

0231 - Yellow<sup>(1)</sup>



0244 - Yellow<sup>(2)</sup> **R**

<sup>(1)</sup> available in 2021

<sup>(2)</sup> available in 2020



# RICE EMBOSSING



SLIP RESISTANCE **R10 RATED**

**10 YEARS** OF EXPERIENCE

**16** COLOURS



# CONCRETE EMBOSSING

NEW



SLIP RESISTANCE **R10 RATED**

**HSE 36** COMPLIANT

**7** COLOURS



# HEAVY TRAFFIC **RESISTANCE!**



- Dynamic Load: up to 6000 kg\*
- Static load: up to 50 kg/cm<sup>2</sup>

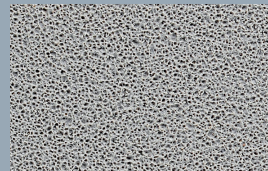
## INSTALLATION ON **ANY TYPE OF SURFACE**



TILES



CONCRETE



RESIN



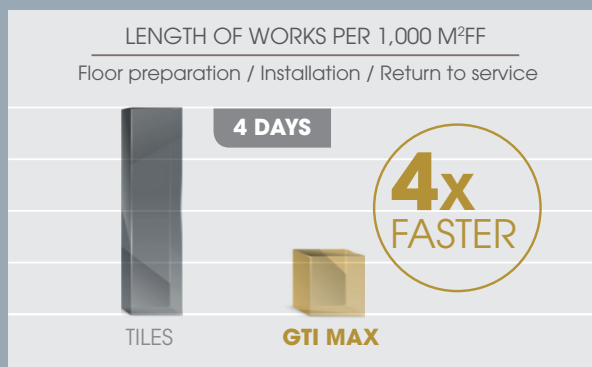
WET SURFACES  
- up to 7% humidity / 92% RH



ASBESTOS SURFACES



## NO NEED TO **STOP WORK**



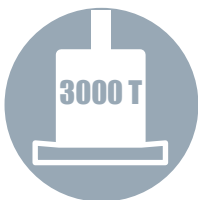
- Fast looselay installation allowing the area to remain open
- Clean installation - no adhesive or dust
- A 2 person team can install up to 200m<sup>2</sup> in 8 hours

\* Refer to installation guidelines



# GTI MAX

## HARD-WEARING



- Tiles triple pressed at over **3000 T**



- **2mm** wear layer



- PUR+ surface treatment enabling **easy maintenance**

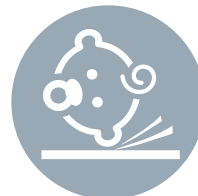
## USER COMFORT & SAFETY



- **19 dB** less noise than tiling when users walk on it
- Underfoot comfort: **reduces fatigue**



- More slip-resistant than other types of surface (**R10 rated**)

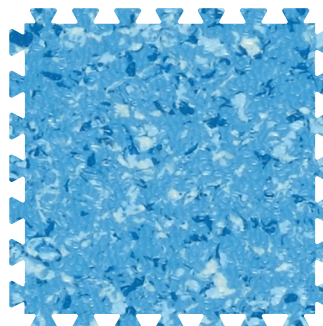


- **4 x less hazardous** than tiling in the head impact assessment (Standard 1177: head impact - 66 cm vs. 10 cm)



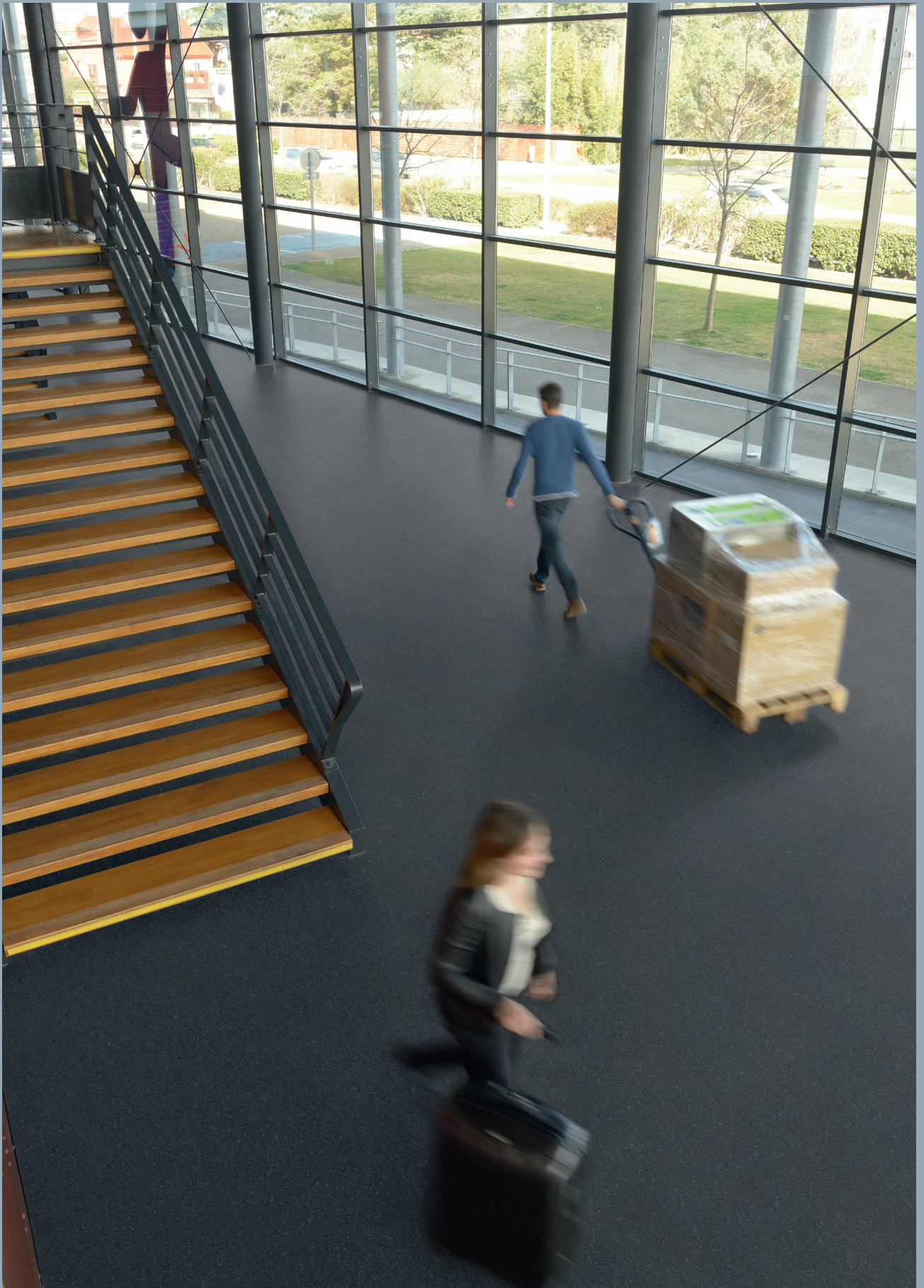
## DESIGNS & LAYOUT

- Easy to install: modular tile format
- 23 colours to create zoning & corners



635 x 635 mm







# TRIAL BY EXPERIENCE



## THE HOTEL AND HOSPITALITY SECTOR



The installation of our new flooring has breathed fresh life into this area of high pedestrian traffic. It is light and easy to maintain - we love it!

Blaine, USA - 200 m<sup>2</sup> of GTI Max

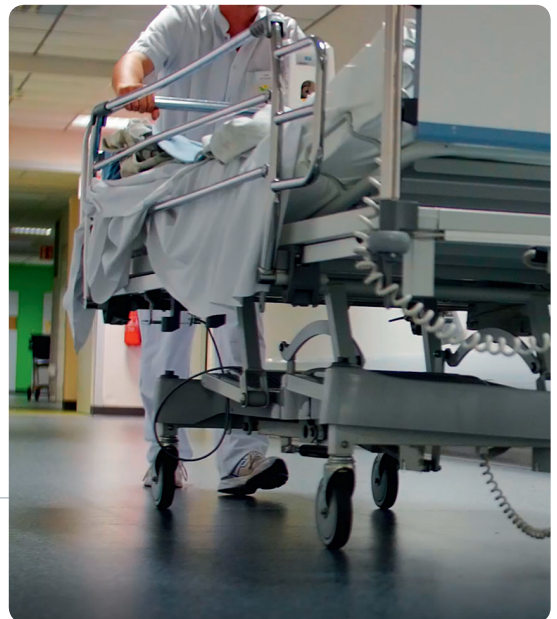


## HEALTHCARE - DRÔME HOSPITAL



We had to renew the floor coverings in the two main passageways of the hospital, without closing off access to areas that are submitted to heavy pedestrian and logistics traffic. Gerflor's GTI flooring was the natural and obvious choice.

Romans, France  
300 m<sup>2</sup> of GTI Max



## HEATHROW AIRPORT TERMINAL 3



The GTI Max tiling perfectly fulfilled all of our selection criteria:

- To keep pedestrian and machinery routes open throughout its installation
- To allow existing furniture to remain in place
- To minimise any weight addition to the airport structure

Heathrow, England  
4000 m<sup>2</sup> of GTI Max





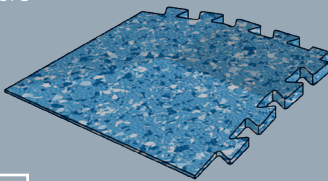
# FULL SOLUTION

## 100% LOOSELAY **FLOORS AND FINISHES**

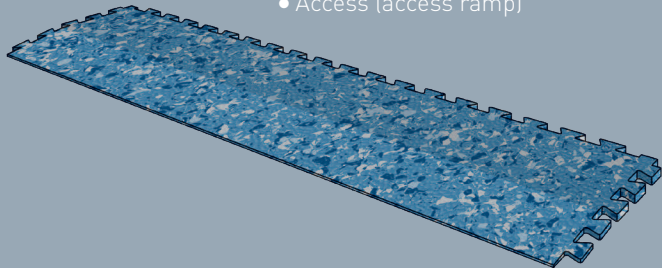
### FINISHING SOLUTIONS

#### **CORNER & ACCESS**

- Corners



- Access (access ramp)



##### **THE +**

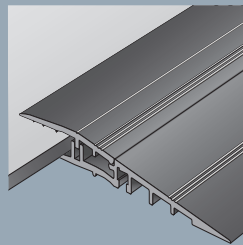
- All GTI MAX colours available

#### **ALUMINIUM RAMP**

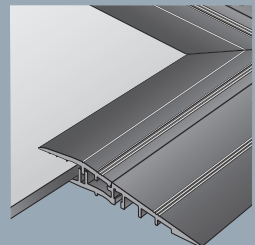
- Withstands intensive footfall
- Unique 100% loose-lay system

##### **THE +**

- Quick to install and can be removed without causing any damage
- Elegant and durable aluminium

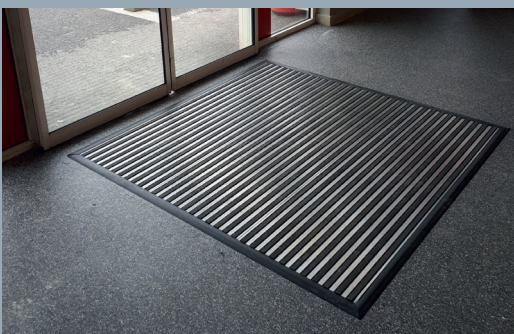


0609 - Ramp



0629 - Corner

#### **ESPLANADE 9000 KIT**



1700 - Esplanade 9000

- Very resistant materials and closed construction for a long lasting performance and high mechanical solicitation
- Semi loose-lay installation inside LVT / GTI
- Full kit ready to lay
- Adapted to GTI thickness



## TAILOR-MADE SOLUTION

### MY LOGO



- Create your logo using our water jet cutting system.
- The logo is produced using the finished product.

#### THE +

- Withstands intensive footfall without fading.

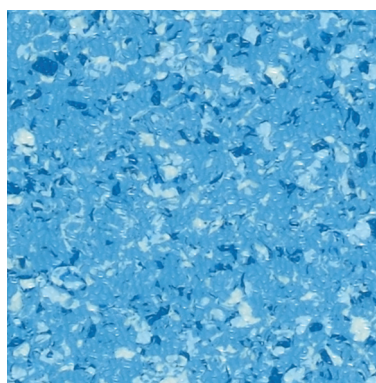
## 100% WATERPROOF SOLUTION

### GTI MAX CLEANTECH TILE

- Square with straight edges
- Heat seamable

#### THE +

- Enables a waterproof surface



600 x 600 mm





## LESS ADHESIVE MORE RECYCLING



### COMPOSITION

- 100% REACH compliant
- FREE of formaldehyde
- FREE of heavy metals
- FREE of solvent



### RECYCLED CONTENT

- 80% recycled content
- 100% REACH compliant recycled content



### LIFE CYCLE ANALYSIS

- Eco-designed according to a product specific Life Cycle Analysis
- Product specific EPD (Environmental Products Declaration) available
- Manufactured in an ISO 14001 and ISO 50001 certified site
- Contribution to many Green Building Schemes (LEED, HQE, BREEAM...)



### RECYCLING

- 100% recyclable product



### INSTALLATION

- Adhesive free installation



### INDOOR AIR QUALITY

- TVOC emissions 10 times better than norm requirements (TVOC < 100 µg/m<sup>3</sup> after 28 days)
- Floorscore® certified
- M1 certified
- Comply with AgBB protocol
- No formaldehyde emission

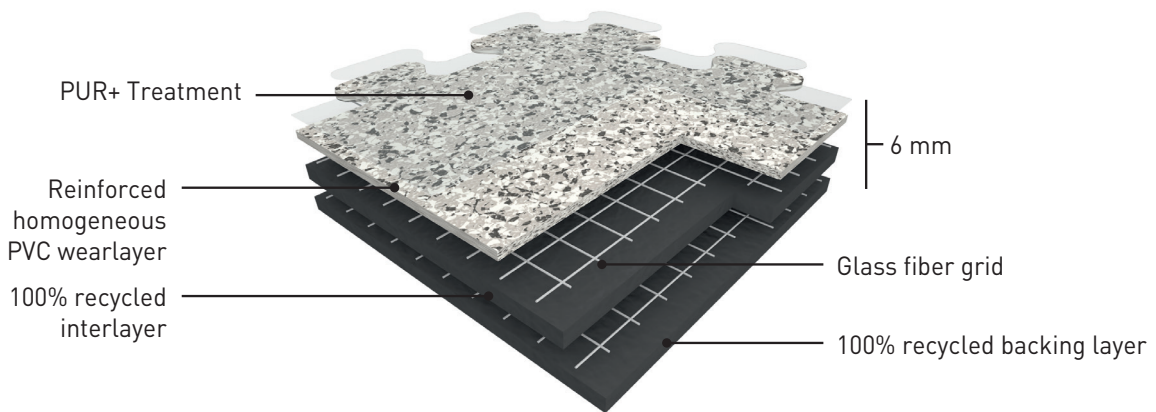






# TECHNICAL DATA

## GTI MAX



**GTI MAX CONNECT** is a multi-layered interlocking loose-lay vinyl tile with polyurethane treatment (PUR+), 6 mm thick with a dovetail joint, abrasion group T. It is manufactured by GERFLOR using a continuous and exclusive high pressure process.

**GTI MAX CLEANTECH** is a multi-layered loose-lay vinyl tile with polyurethane treatment (PUR+), 6 mm thick with welded joints, abrasion group T. It is manufactured by GERFLOR using a continuous high pressure process.

**The GTI MAX** wear layer is reinforced by specific oblong fillers that offers an outstanding resistance to traffic.

**GTI MAX** is reinforced with 2 glass fiber grids on either side of an intermediate pressed homogeneous layer.

GTI's backing is a 4 mm thick black pressed homogeneous sheet, its surface is a colored and reinforced homogeneous sheet 2 mm thick.

It is made of 100% controlled recycled materials.

It is 100% recyclable and made with up to 80% recycled content.

### GTI MAX





- ▶ Resistant to heavy traffic
- ▶ Fast renovation: can be installed over existing floorcovering
- ▶ No subfloor preparation, no adhesive and no production stoppage (no loss of revenue)
- ▶ Polyurethane surface treatment PUR+ for ease of maintenance
- ▶ 6 Standard logos: Mix and match colours to create corners and walkways



## GTI MAX

CONCRETE EMOSS

RICE EMOSS

DESCRIPTION				
Total thickness	EN ISO 24346	mm	6	
Wearlayer thickness	EN ISO 24340	mm	2	
Weight	EN ISO 23997	g/sq.m	9365	
Size <b>CONNECT</b>	EN ISO 24342	mm	635 x 635	
Size <b>CLEANTECH<sup>(1)</sup></b> (without dovetail)			600 x 600	
CLASSIFICATION				
Norm / Product specification	-	-	EN ISO 10582	
European classification	EN ISO 10874	Class	34-43	
Fire rating	EN 13 501-1	Class	B <sub>fl</sub> -s1	
Static electrical propensity	EN 1815	kV	≤ 2	
Slip resistance wet: ramp test with oil	DIN 51 130	Class	R10	
Pendulum test	BS 7976	-	HSE 36 compliant <sup>(2)</sup>	-
PERFORMANCES				
Wear resistance	EN 660.2	mm <sup>3</sup>	≤ 2.0	
Wear group	-	-	T	
Type Binder content	ISO 10582	type	I	
Dimensional stability	EN ISO 23999	%	≤ 0.15	
Residual indentation	EN ISO 24343-1	mm	≤ 0.10	
Castor chair test (type W)	ISO 4918	-	OK	
Shore Hardness	EN ISO 868	Hd	≥ 55	
Shifting resistance	CSTB 3562	N/mm <sup>2</sup>	≥ 30	
Thermal conductivity	EN ISO 10456	W/(m.K)	0.25	
Colour fastness	EN 20 105 - B02	Degree	≥ 6	
Surface treatment	-	-	PUR+	
Chemical products resistance	EN ISO 26987	-	OK	
ENVIRONMENT / INDOOR AIR QUALITY				
TVOC after 28 days	ISO 16000-6	µg / m <sup>3</sup>	<100	
Certification	-	-	Floorscore®	
CE MARKING				
CE		EN 14041	   	

(1) Available upon request

(2) HSE 36 compliant only for 7 references: Ermellino - Ora - Bora - Libeccio - Grecale - Scirocco - Tramontana

**Gerflor** Don't forget our complementary ranges!



Handrails



Wall Coverings  
& Protections



Entrance mats



Skirtings  
& Profiles



**Gerflor International**

Tel: +33 (0)4 74 05 40 00

Fax: +33 (0)4 74 05 03 13

e-mail: gerflorcontract@gerflor.com



Z0044881

**Gerflor**

Be connected!



www.gerflor.com

#Gerflor

**GTI MAX: LESS ADHESIVE, MORE RECYCLING**



**COMPOSITION**  
100% REACH



**INSTALLATION**  
Adhesive free



**INDOOR  
AIR QUALITY**  
10 times lower  
than norms requirements  
(TVOC <100 µg/m³ after 28 days)



**RECYCLED  
CONTENT**  
80%



**RECYCLABILITY**  
100%  
recyclable product



**LCA**  
Eco-designed  
according to a  
product specific Life  
Cycle Analysis

**Gerflor**  
theflooringgroup