

TARALAY INITIAL

gerflor.com



Gerflor[®]
theflooringgroup





TARALAY INITIAL



High performance indentation / acoustic:

- Compact: 0,03mm / 6 dB
- Comfort: 0,10mm / 19 dB



Easy maintenance:

Protectsol® Surface Treatment reduces cost and time of cleaning - no wax



All references are available in compact and comfort



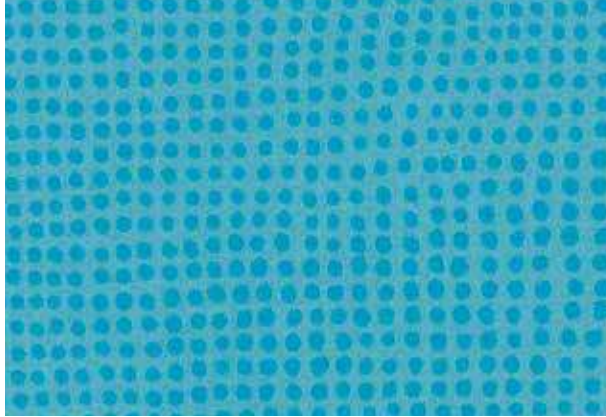
Comfort and Safety:

High Density foam backing for walking comfort and fall absorption

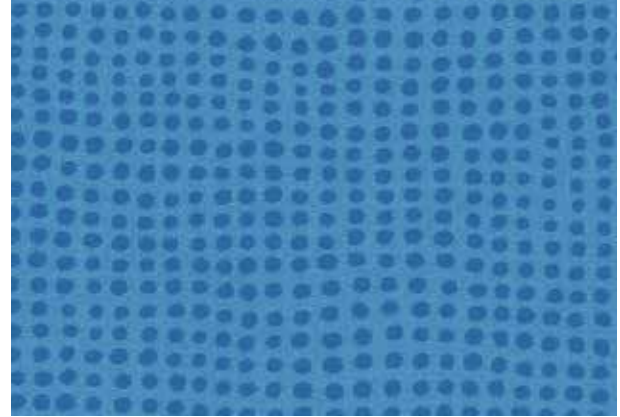




TARALAY INITIAL



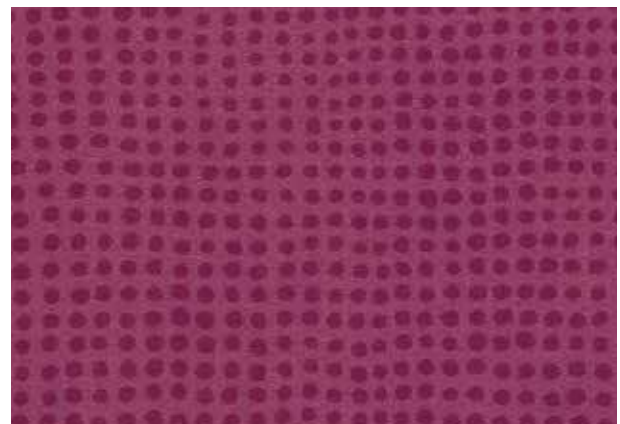
0825 - Diversion Turquoise
NCS: 2050-B20G / LRV: 30.5



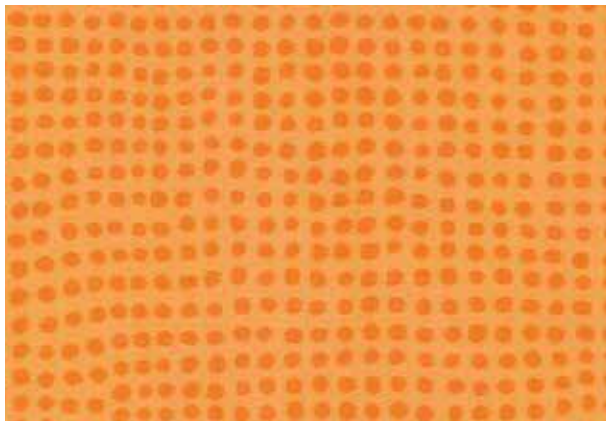
0597 - Diversion Atlantique
NCS: 3050-R90B / LRV: 21.4



0599 - Diversion Rose
NCS: 2050-R20B / LRV: 23.5



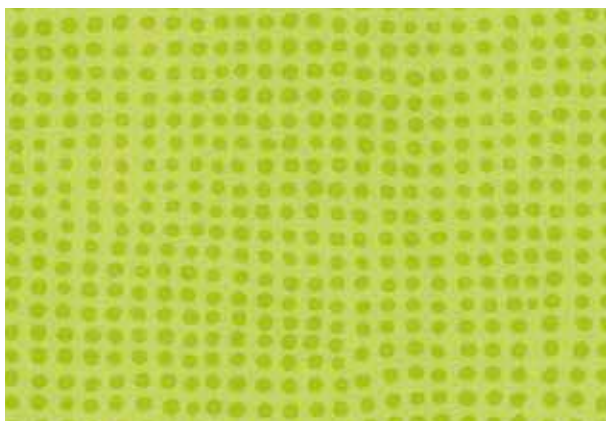
0516 - Diversion Bordeaux
NCS: 4040-R20B / LRV: 10.8



0600 - Diversion Clementine
NCS: 1080-Y40 / LRV: 36.3



0595 - Diversion Grenade
NCS: 2070-Y90R / LRV: 17



0515 - Diversion Kiwi
NCS: 2050-G70Y / LRV: 45



0596 - Diversion Mimosa
NCS: 1060-Y20R / LRV: 56.2



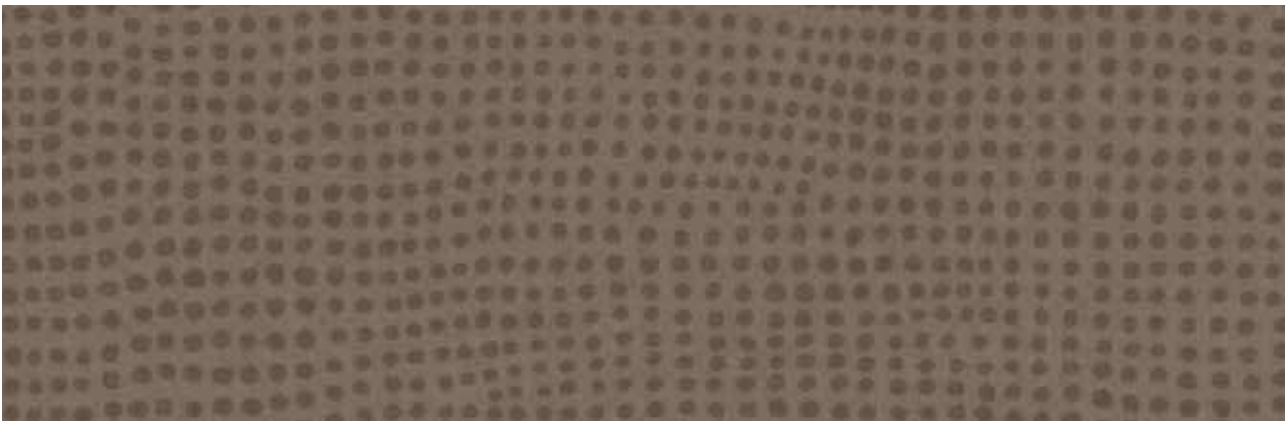
0823 - Tweedy Beige
NCS: 3005-Y50R / LRV: 44.9



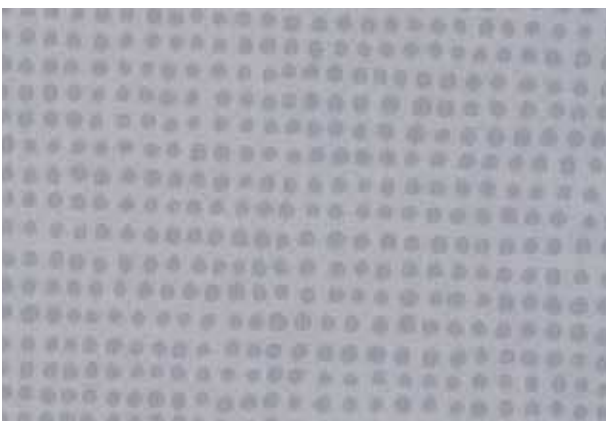
0545 - Tweedy Natural
NCS: 2502-Y / LRV: 45.2



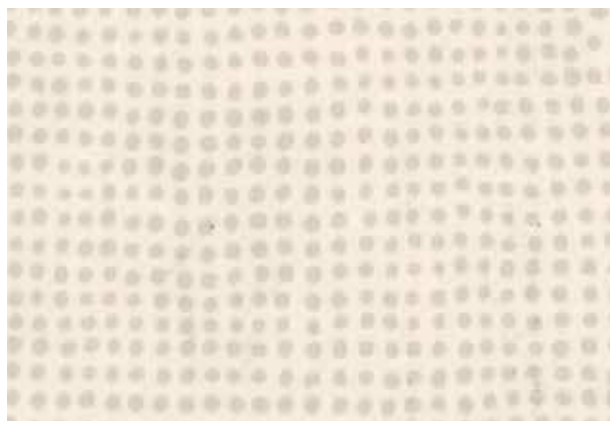
0822 - Tweedy Taupe
NCS: 6005-Y20R / LRV: 17.5



0049 - Diversión Carbone
NCS: 6005-Y50R / LRV: 13.7




0824 - Diversión Souris
NCS: 3502-B / LRV: 36.7



0047 - Diversión Ivoire
NCS: 1502-Y / LRV: 60.7

TARALAY INITIAL




No strip
Continuous
design

0829 - Filament Cream
NCS: 2005-Y20R / LRV: 50.3




16.6 cm

0797 - Habana Ivory
NCS: 2005-Y50R / LRV: 52.7




16.6 cm

0828 - Habana Beige
NCS: 4010-Y30R / LRV: 35.8





16.6 cm

0588 - Noma Clair
NCS: 3005-Y50R / LRV: 36.5

Comfort version 




No strip
Continuous
design

0024 - Renzo Chamois
NCS: 3020-Y30R / LRV: 35

Compact version 




6.2 cm

0779 - Ottawa Poplar
NCS: 2030 - Y30R / LRV: 40




10 cm

0636 - Esterel Blond
NCS: 5030-Y40R / LRV: 25.6




16.6 cm

0589 - Noma Marron
NCS: 5010 - Y50R / LRV: 22.1

TARALAY INITIAL



No strip
Continuous
design

0590 - Renzo Steel
NCS: 6500 / LRV: 14.5



No strip
Continuous
design

0826 - Filament Grey
NCS: 3500-N / LRV: 39.4



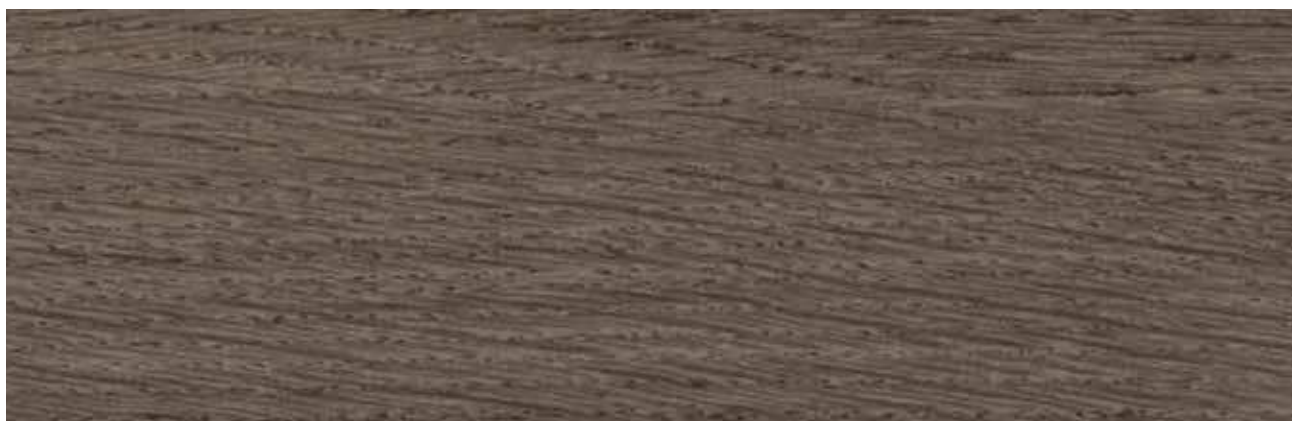
10 cm



No strip
Continuous
design

0518 - Esterel Chocolate
NCS: 6005-Y50R / LRV: 16.3

0799 - Filament Light
NCS: 4005-Y20R / LRV: 31.7

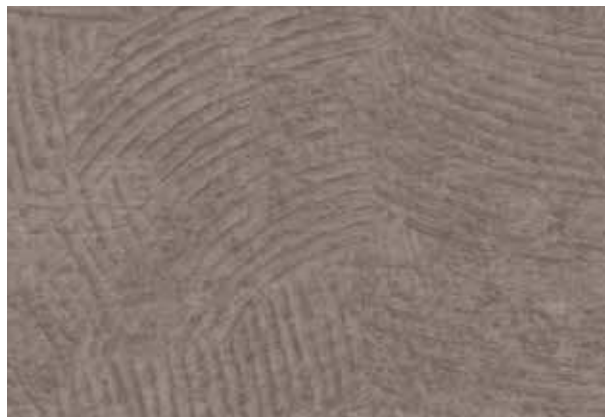


No strip
Continuous
design

0069 - Renzo Noisette
NCS: 7010 - Y30R / LRV: 14.2



0037 - Urban Souris
NCS: 3502-R / LRV: 34.8



0035 - Urban Gris
NCS: 5502-R / LRV: 24.1



0465 - Strada Ciment
NCS: 4502-R / LRV: 25.7



0791 - Strada Metallic
NCS: 5005-Y20R / LRV: 22.3



0790 - Strada Chrome
NCS: 3500-N / LRV: 21.4

TARALAY INITIAL COMPACT PRO

TARALAY INITIAL COMFORT PRO

DESCRIPTION

Total thickness	EN ISO 24346 [EN 428]	mm	2.00	3.35
	ASTM F386-02	inch	0.08	0.13
Wearlayer thickness	EN ISO 24340 [EN 429]	mm	0.70	0.65
	ASTM F410-02	inch	0.028	0.026
Weight	EN ISO 23997 [EN 430]	g/sq.m	2635	2825
Width/length of sheet	EN ISO 24341 [EN 426]	cm / lm	200 / 25	200 / 25
	-	feet - inch	6'6" / 82'	6'6" / 82'

CLASSIFICATION

Norm/product specification	-	-	EN ISO 10582 [EN 649]	EN 651
European classification	EN ISO 10874 [EN 685]	class	34 - 43	34 - 42
Fire rating	EN 13 501-1	class	Bfl-s1	Bfl-s1
Static electrical propensity	EN 1815	kV	< 2	< 2
Slip resistance wet: ramp test with oil ⁽¹⁾	DIN 51 130	class	R10	R10

PERFORMANCES

Wear resistance	EN 660.2	mm ³	≤ 2.0	≤ 2.0
Wear group	NF 189	group	T	T
Type binder content	EN ISO 10582	Type	I	-
Dimensional stability	EN ISO 23999 [EN 434]	%	≤ 0.40	≤ 0.40
Residual indentation (requirement)	EN ISO 24343-1 [EN 433]	mm	≤ 0.10	≤ 0.20
Residual indentation (average measured value)	-	mm	ca. 0.03	0.10
Impact sound insulation	EN ISO 717-2	dB	6	19
Castor chair test (type W)	ISO 4918 [EN 425]	-	OK	OK
Thermal conductivity	EN ISO 10456 [EN 12524]	W/(m.K)	0.25	0.25
Colour fastness	EN 20 105 - B02	degree	≥ 6	≥ 6
Surface treatment	-	-	Protectsol®	Protectsol®
Chemical products resistance	EN ISO 26987 [EN 423]	-	OK	OK
Anti-bacterial activity (E. coli - S. aureus - MRSA) ⁽²⁾	ISO 22196	-	> 99% inhibits growth	> 99% inhibits growth

ENVIRONMENT / INDOOR QUALITY AIR

TVOC after 28 days	ISO 16000-6	µg/m ³	< 10	< 10
Certification	-	-	Floorscore®	Floorscore®

CE marking

CE	EN 14041	-		
		-		

(1) For lifetime sustainable wet resistance, please refer to Tarasafe ranges
 (2) The implementation of an effective cleaning regime is the best defence against infection

IMPORTANT: The information contained in this document is valid from 01/09/2017 and is subject to change at any time without notice. In the context of constantly changing technology, our customers are responsible, prior to any use, for checking with us that this document is the version in force.

Rubber leaves indelible stains on vinyl floorings: do not use mats with rubber backing and replace tubular furniture feet with those made of PVC or polyamide. Place mats of sufficient length at entrances to reduce outside sources of dirt.

Product description and technical data sheet available in various languages. See our Gerflor Country websites.

Installation and Maintenance Guidelines, Complementary ranges available on our Gerflor website.

TARALAY INITIAL, **LESS SPEAKING FOR MORE ACTIONS**

 COMPOSITION 100% REACH	 INDOOR AIR QUALITY 100 times lower than norms requirements (TVOC < 10 µg/m ³ after 28 days)	 RECYCLABILITY 100%	 LCA Eco-designed according to a product specific life cycle analysis	 WELLNESS Anti slip R10 Comfort version : Walking comfort < 65 dB (best certification) and impact sound insulation - 19dB
--------------------------------------	--	----------------------------------	--	---

Gerflor Be connected!

www.gerflor.com

#Gerflor